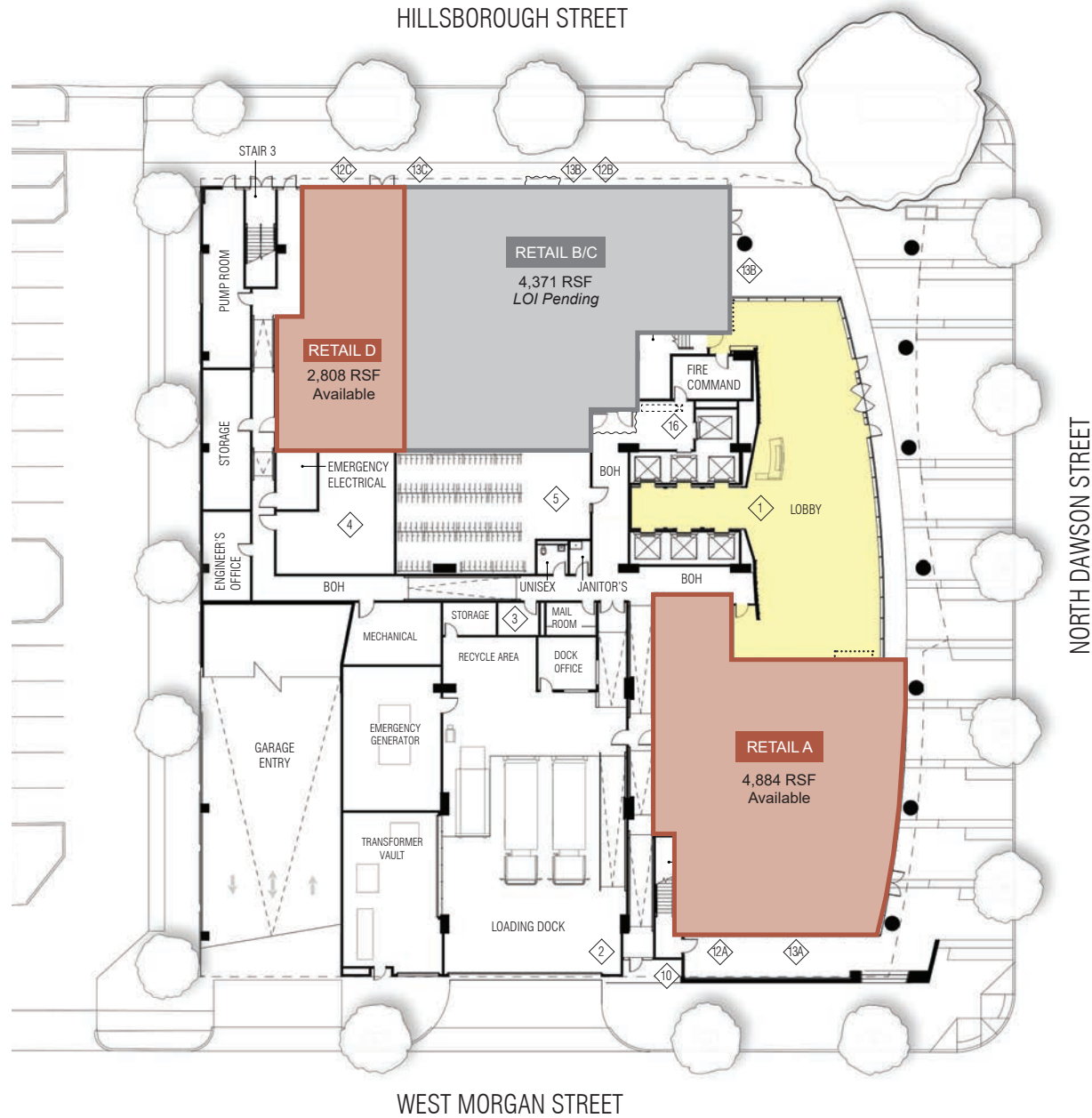


GROUND FLOOR RETAIL



**FOR RETAIL LEASING,
CONTACT:**

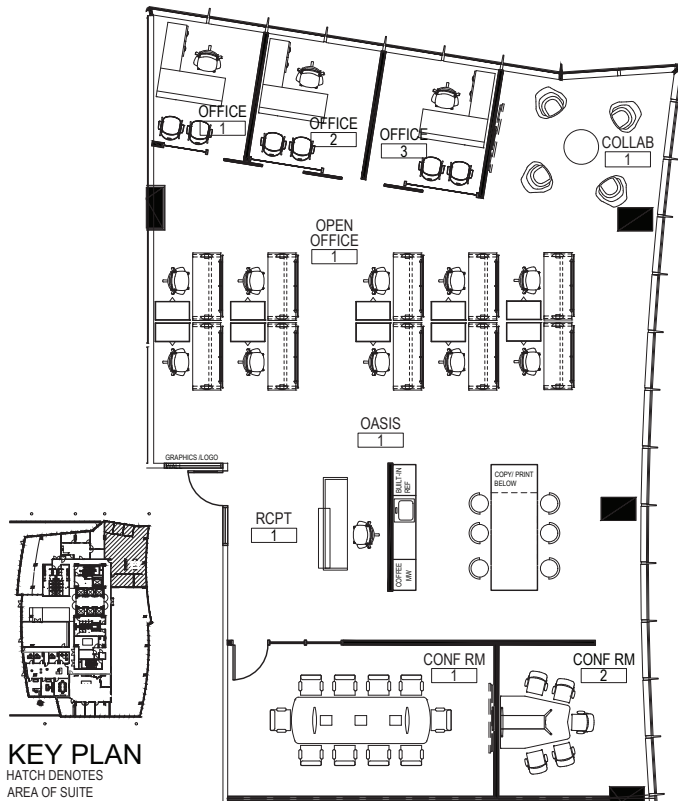
CBRE | Raleigh

MATT LARSON
EXECUTIVE VICE PRESIDENT
+1 919 831 8268
matt.larson@cbre-raleigh.com

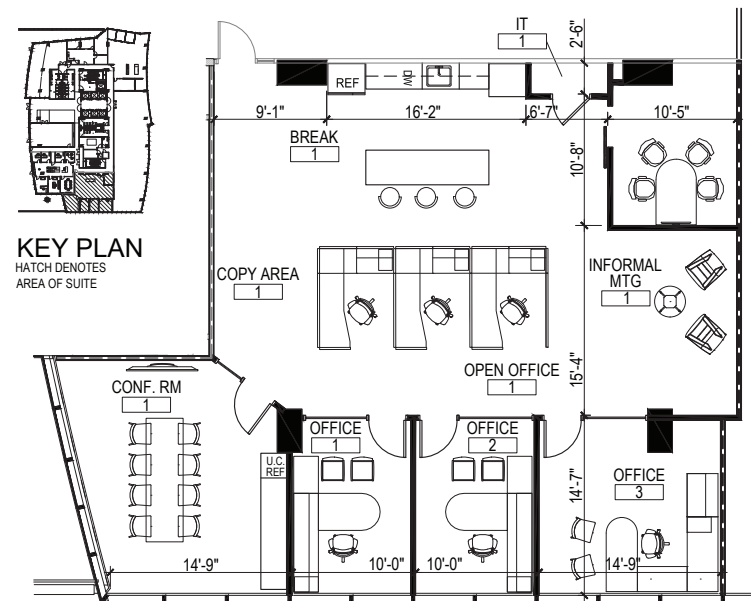
CHARLIE COYNE
EXECUTIVE VICE PRESIDENT, DIRECTOR
+1 919 831 8233
charlie.coyne@cbre-raleigh.com

9TH FLOOR

SUITE 921 • 3,324 SF (SPECULATIVE LAYOUT)



SUITE 930 • 2,625 SF (SPECULATIVE LAYOUT)



**FOR OFFICE LEASING,
CONTACT:**

CBRE | Raleigh

BRAD CORSMEIER
EXECUTIVE VICE PRESIDENT

+1 919 831 8236
brad.corsmeier@cbre-raleigh.com

ED PULLIAM
EXECUTIVE VICE PRESIDENT

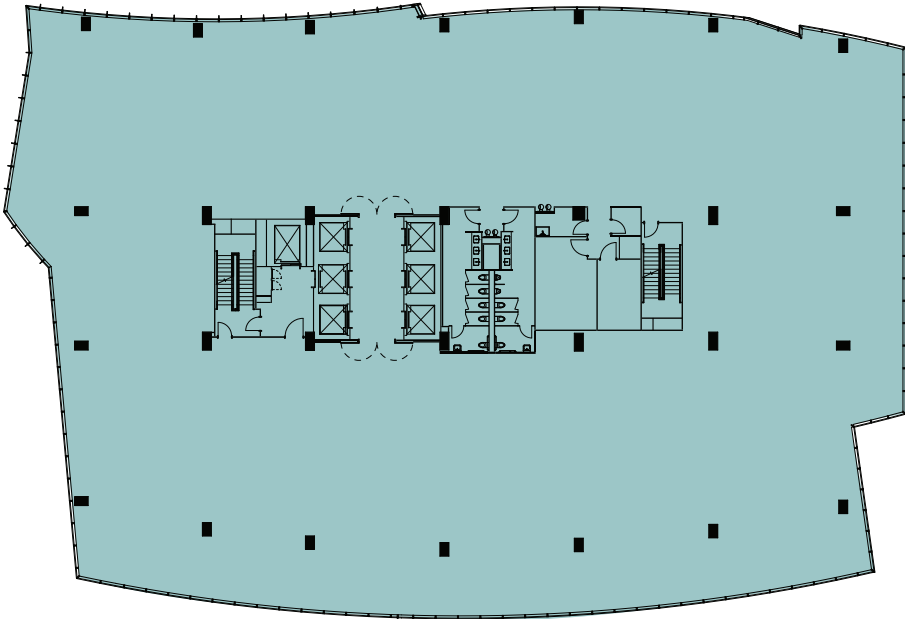
+1 919 831 8237
ed.pulliam@cbre-raleigh.com

HASTINGS JONES
ASSISTANT VICE PRESIDENT

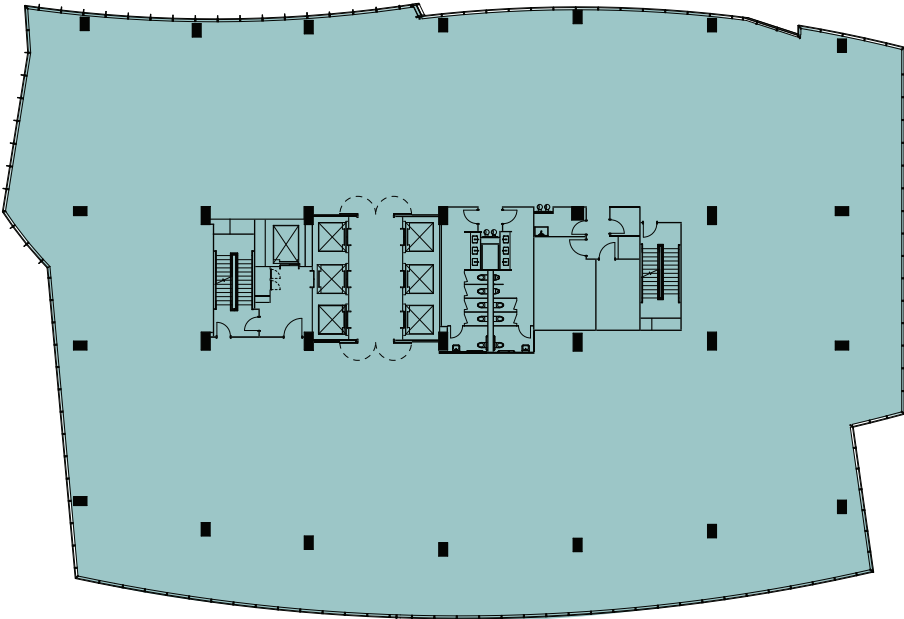
+1 919 831 8219
hastings.jones@cbre-raleigh.com

TWO FULL FLOORS REMAIN

10TH FLOOR



11TH FLOOR



**FOR OFFICE LEASING,
CONTACT:**

CBRE | Raleigh

BRAD CORSMEIER
EXECUTIVE VICE PRESIDENT
+1 919 831 8236
brad.corsmeier@cbre-raleigh.com

ED PULLIAM
EXECUTIVE VICE PRESIDENT
+1 919 831 8237
ed.pulliam@cbre-raleigh.com

HASTINGS JONES
ASSISTANT VICE PRESIDENT
+1 919 831 8219
hastings.jones@cbre-raleigh.com